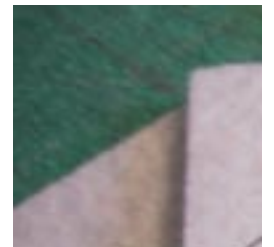
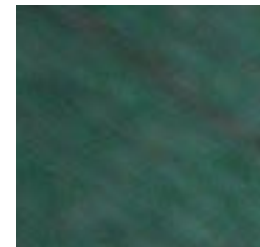


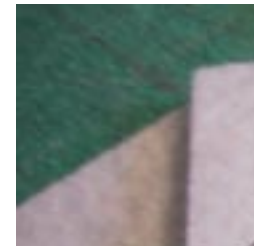
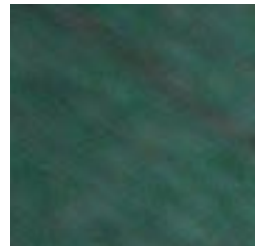
Model *Commercial Interior, ID 532, Marymount Univ, Fall 2006, Charlotte Bell*



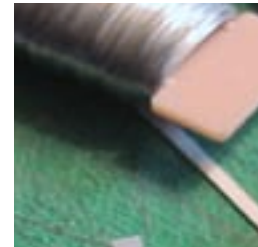
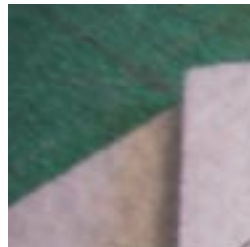
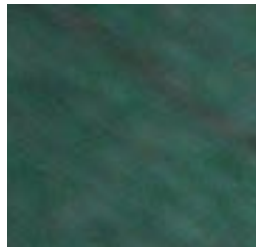
Assignment *Build a composite model of building systems*



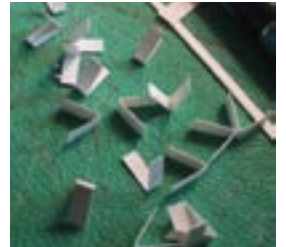
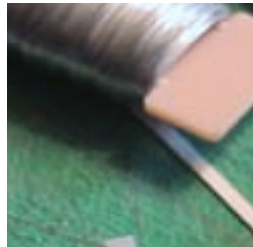
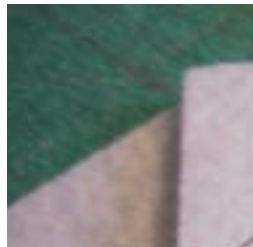
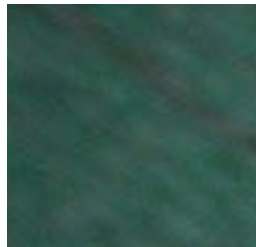
Solution *A room in a commercial building, scale: 1" = 1'-0"*



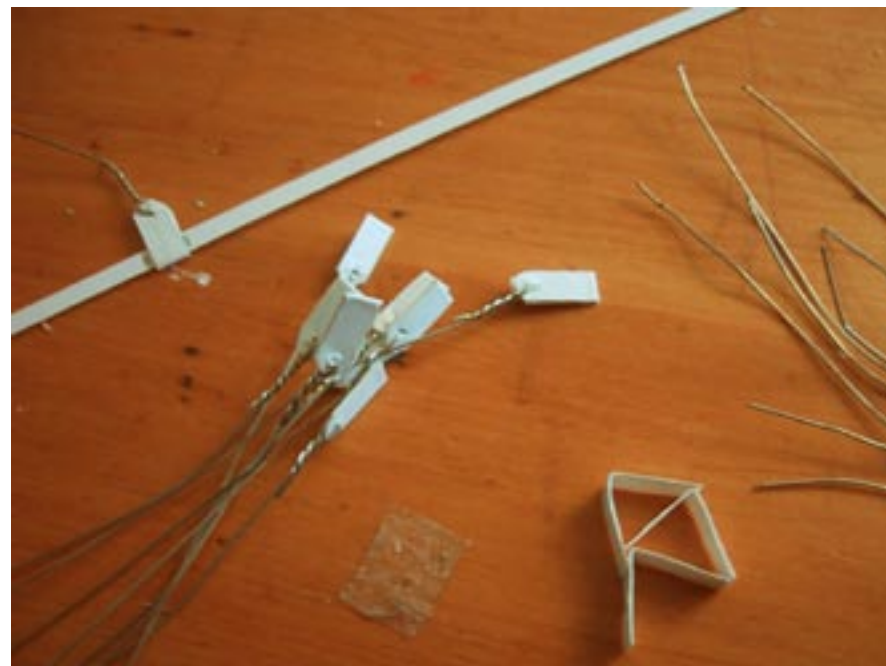
Systems *Structural, suspended acoustical ceiling, HVAC, fire safety, finishes*



Process *Piece by piece*

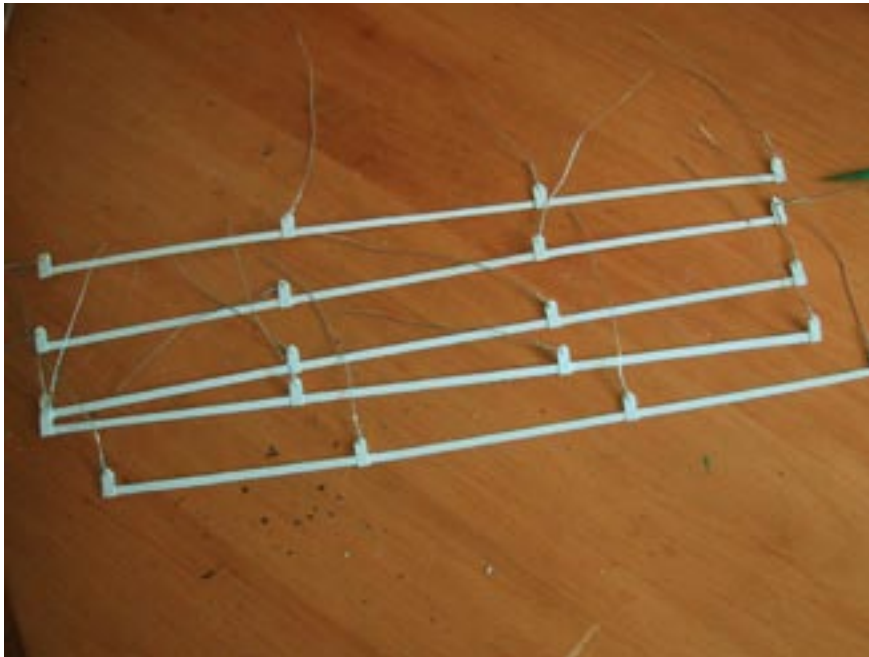


Pieces





Components



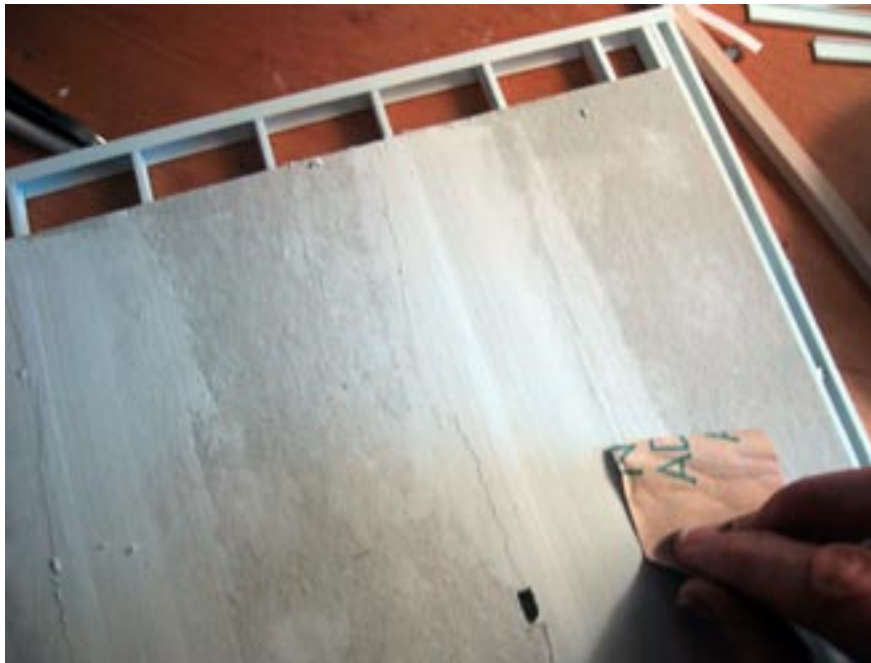


Details



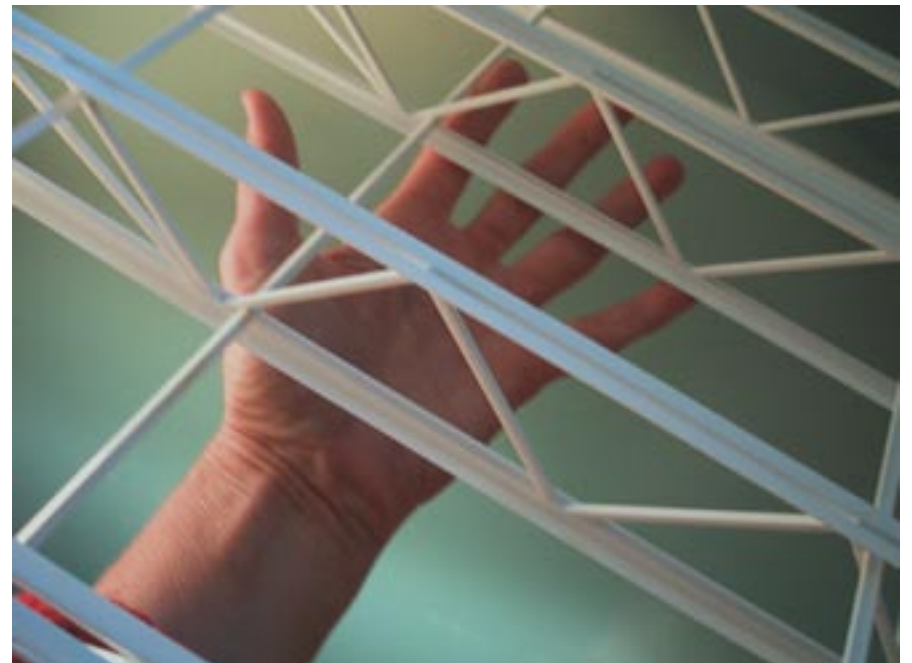
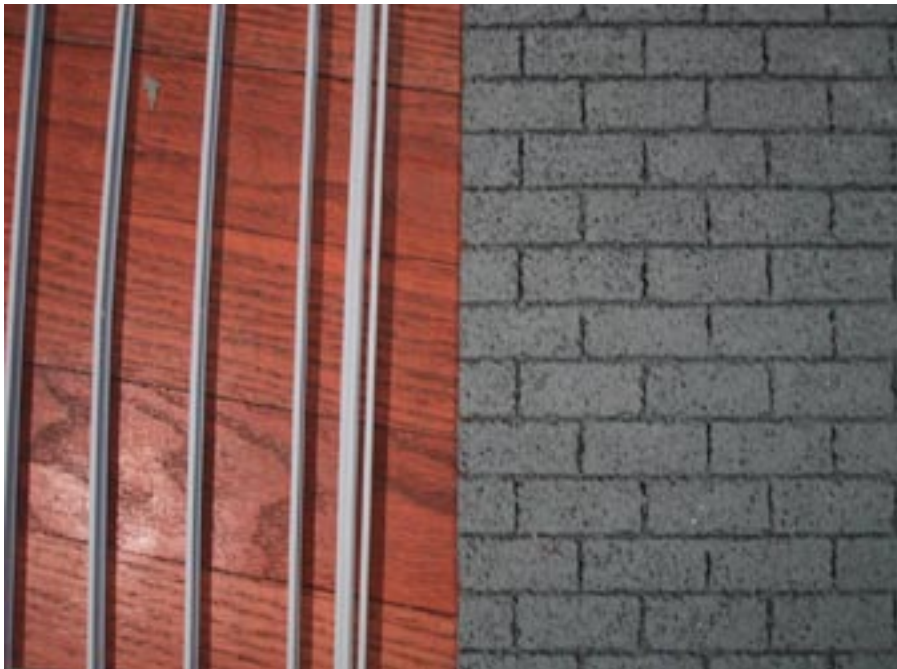


Building





Structure



Model



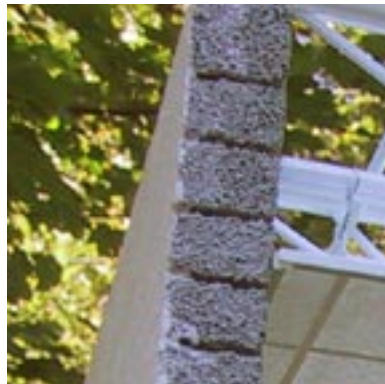
Model



Model



Model





Systems

Structural Systems *Concrete masonry unit wall (concrete masonry unit, bond beam, steel truss support, furring), nonbearing metal-frame wall (drywall track, stud, spacer bar), open-web steel truss (chords, web, chord extension, lateral bracing), floor (poured concrete slab, poured concrete on steel pan)*

Suspended Acoustical Ceiling System *Main beam, cross tee, wall trim, mineral fiber acoustical panel, hanger wire*

Electrical Systems *Junction box, armored cable, punch-through floor receptacle, recessed ceiling troffer, utility box, wall receptacle*

Fire Safety System *Water supply pipe, sprinkler head*

HVAC System *Supply air diffuser, supply air duct, return air grille, return air duct*

Finishes *Parging, drywall, tape embedded in joint compound, primer, paint, baseboard, carpet tile, adhesive*



Materials

Structural Systems Styrofoam, paper, styrene, cardboard, joint compound, paint, cornmeal, foam core

Suspended Acoustical Ceiling System Paper, felt, styrene, wire

Electrical Systems Cardboard, string, paint

Fire Safety System Aluminum tubing, paper

HVAC System Paper, paint, felt, duct tape

Finishes Joint compound, cardboard, paper, paint, wood, felt, markers